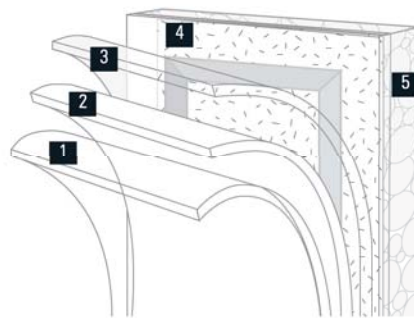


24 GAUGE STEEL PAN DOOR



9' x 7' TradeMark, Colonial in White with Single Pane Windows

The combination of durable, 24 gauge steel, defined raised panel styling and authentic woodgrain texture gives your home curb appeal with TradeMark™ garage doors. Add charm with colonial or ranch panels, or for a distinctive look on your home, choose the carriage house option.



- 1 Baked-on Finish
- 2 Epoxy Primer
- 3 Galvanized Layer
- 4 High-Strength Steel
- 5 Polystyrene Insulation (optional feature)

TradeMark™ sections are constructed from high-strength rust-resistant, galvanized steel and are coated with a baked-on polyester paint finish for extended life. TradeMark sections are available with an optional layer of polystyrene insulation for additional thermal efficiency.

WARRANTY:

Sections*: Limited Lifetime (Rust-Through) — Track/Hardware: 5-year — Springs: 3-year

*See full warranty details, available at www.raynor.com

WWW.RAYNOR.COM

Hardware



Track formed from strong galvanized steel, paired with durable, long-wearing steel rollers ensures smooth, quiet operation.

Insulation



An energy-saving core of polystyrene insulation provides added comfort and helps keep your garage quieter.

Section Joints



Strong, roll-formed tongue-and-groove meeting rails seal out wind, rain, and snow, keeping your garage dry and secure.

Authentic Woodgrain



Authentic woodgrain texture on the door's exterior adds visual appeal.

Carriage House Option



The carriage house panel option offers a maintenance-free carriage house design in a steel pan door. Add character to your door with attractive decorative face hardware.

ArmorFinish™ Option



For homes in a coastal environment, ArmorFinish is a durable, fade-resistant laminate film that serves as a protective barrier from harsh winds, rain, ocean spray, sun, and sand. Available in White and Almond.

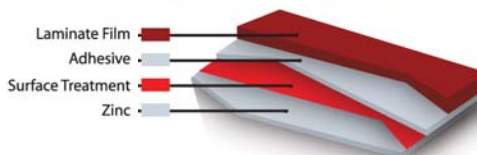
Decorative Hardware

The black matte powdercoated straps and handles are designed to appear hand-forged, adding a historically-accurate dimensional quality to your door. Choose from handles and straps with Bean or Fleur-de-lis designs.



White Almond

Laminate Finish Construction



SIZES

Heights: 6'6" through 10' in 3" increments*

Widths: 4' through 20' in one inch increments

*7'3" height not available. Additional heights available. See Commercial TradeMark in SteelForm.

PANEL STYLES*



1-Car Colonial



2-Car Colonial



1-Car Ranch



2-Car Ranch



1-Car Carriage House



2-Car Carriage House

*1-car doors shown in 8' x 7' configuration.

2-car doors shown in 16' x 7' configuration.

COLORS



SNAP-IN WINDOW STYLES*



Plain Ranch (shown) or Colonial



Stockbridge Ranch



Sunburst Colonial



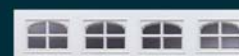
Sunburst Ranch



Stockton Colonial



Stockton Ranch



Cascade Colonial



Cascade Ranch



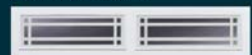
Sherwood Colonial



Cathedral Colonial



Arched Stockton Ranch



Prairie Ranch

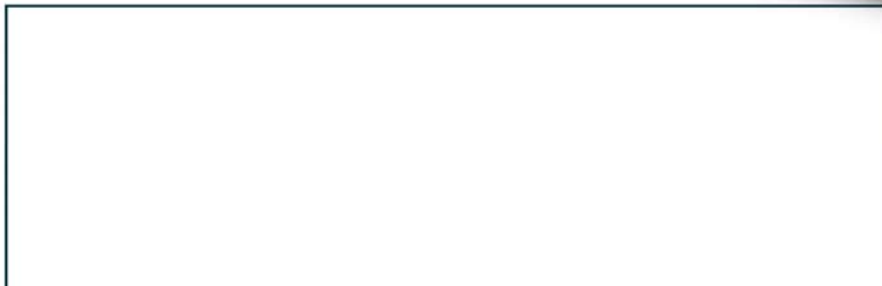
Available for ranch & carriage house options.



Sunray Ranch*

*Not all window styles are shown. Please consult your Raynor Dealer or see the Raynor Decorative Windows literature for more options.

*Windows are shown in single-car configurations, with the exception of Sunray Ranch.



RAYNOR

800-4-RAYNOR (472-9667)

www.raynor.com